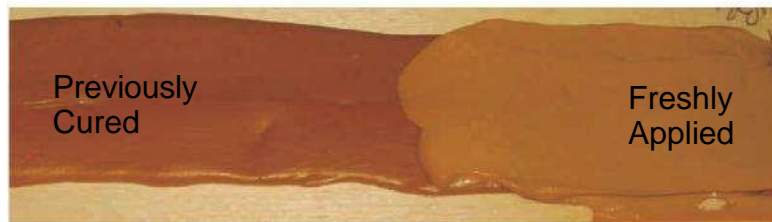


The Color of Check Mate 2

Although the color of Check Mate 2 may be apparent right out of the tube (gray versus brown for example), the final shade of the color will not be evident until the Check Mate 2 has had a chance to dry. The picture below helps to illustrate. Although the Medium Brown looks light when first applied, after five hours the color matches closely the color of Check Mate 2 Medium Brown that had been allowed to cure several days. This test was done inside at room temperature. Cold temperatures and humid conditions will obviously delay the drying process. But the important fact is that the color of Check Mate 2 will darken as it dries.

Check Mate 2 Medium Brown



As Applied at 9:00 AM



After Drying Until 2:00 PM

Technical Tip

This darkening is not as apparent in the lighter color browns and Clear Check Mate 2 comes out of the tube white but dries clear. If you think you have received the wrong color Check Mate 2 please spread a thin layer of it out on a piece of paper and let it dry overnight before deciding that it is truly the wrong color.

Like all our sealants, the thicker Check Mate 2 is applied the longer it takes to cure. Be sure to always use Backer Rod in checks in order to keep the Check Mate 2 the proper thickness of about 3/8 inch.