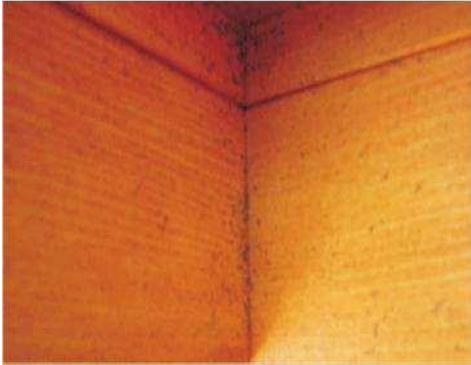


The Use of Steel Wool or a Wire Brush



Most of the directions for our finishes contain the statement, *“Do not use LIFELINE™ on surfaces that have been brushed or rubbed with steel wool or a wire brush. If you do, rust spots may appear under the finish.”* Fortunately, we rarely see the consequences of applying one of our finishes on a wall that has been subjected to steel wool or a wire brush, but occasionally it does happen.

The customer who took this picture thought that the dark spots in the corners were due to mold; however, they appeared within days after the finish was applied. We were able to obtain a small section of the discolored wood and looking at it gives the impression that the discolorations could have been mold or pieces of dirt present at the time of staining. Even under the microscope at 10X magnification, there was no indication of what caused the black spots.



Sample Section



10X Magnification



60X Magnification

At 60X magnification the black spots contain fibers of steel that are incorporated into the finish. These bits of steel combined with tannins, naturally in the wood, generated these dark spots.